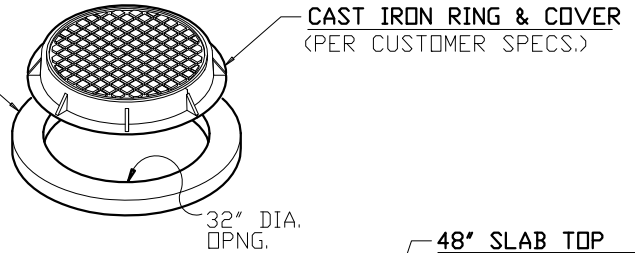
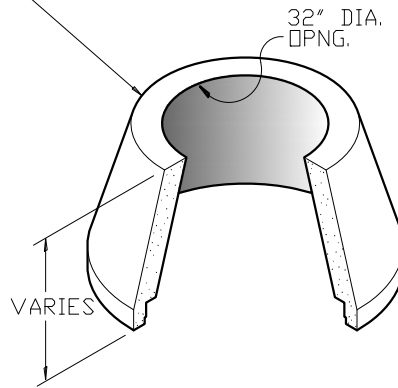


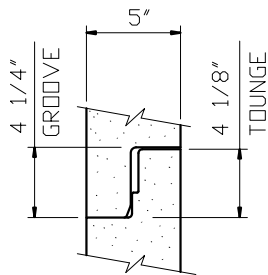
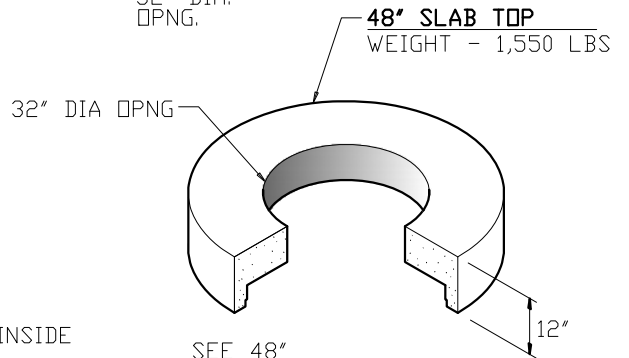
**3' ADJUSTMENT RING (AS REQ.)**  
WEIGHT - 145 LBS



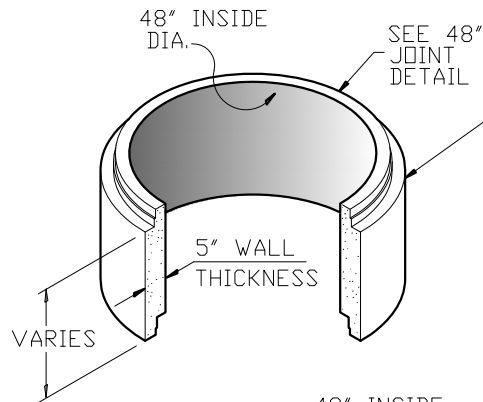
**48" DIA. CONCENTRIC CONE**  
24" HEIGHT - 1,740 LBS  
30" HEIGHT - 2,175 LBS  
36" HEIGHT - 2,610 LBS  
42" HEIGHT - 3,045 LBS  
48" HEIGHT - 3,480 LBS  
60" HEIGHT - 4,350 LBS



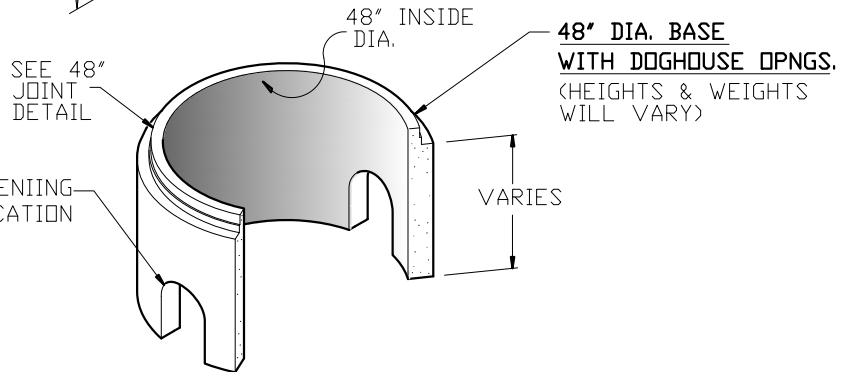
NOTE:  
48" DIA ECCENTRIC CONE  
AVAILABLE AS REQ.



**48" JOINT DETAIL**



**48" DIA. RISERS**  
12" HEIGHT - 870 LBS  
18" HEIGHT - 1,305 LBS  
24" HEIGHT - 1,740 LBS  
36" HEIGHT - 2,610 LBS  
48" HEIGHT - 3,480 LBS  
60" HEIGHT - 4,350 LBS  
72" HEIGHT - 5,220 LBS



**48" DIA. BASE**

NOTE:  
PLEASE REFER TO NC PIPE  
FOR ALL PRECAST BASE  
HEIGHTS AND WEIGHTS.

**GENERAL NOTES:**

- DESIGN SHALL MEET OR EXCEED ASTM C-478 SPECIFICATIONS
- 4500 PSI CONCRETE AT 28 DAYS
- ATSM A615, GRADE 60 REINFORCING
- HS 20 LOADING
- JOINT CONNECTIONS TO BE GASKETS CONFORMING TO ASTM C-443 REQUIREMENTS

**OPTIONAL COATINGS & ADMIXTURES AVAILABLE:**

- FE-100 THANE COAT
- BITUMASTIC
- XYPEX
- CONSHIELD



9235 Main Street #1  
P.O. Box 507  
Needville, Texas, 77461  
1-888-331-5871

"Providing Concrete Environmental Solutions"

48" DIA. DOGHOUSE  
MANHOLE

NC-001-012

Scale: 1/4"=1'-0"  
\* All Dimensions subject to allowable  
specification tolerances.

Date: 02/28/18

Approved By: \_\_\_\_\_ Date: \_\_\_\_\_