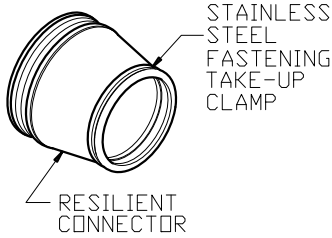


**3" ADJUSTMENT RING (AS REQ.)**  
WEIGHT = 145 LBS

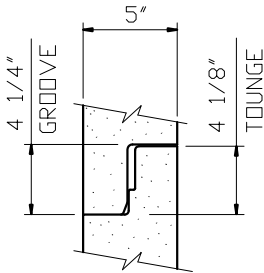
**CAST IRON RING & COVER**  
(PER CUSTOMER SPECS.)

**48" DIA. ECCENTRIC CONE**  
24" HEIGHT - 1,700 LBS  
30" HEIGHT - 2,170 LBS  
36" HEIGHT - 2,580 LBS

NOTE:  
48" DIA. CONCENTRIC CONE  
AVAILABLE AS REQ'D

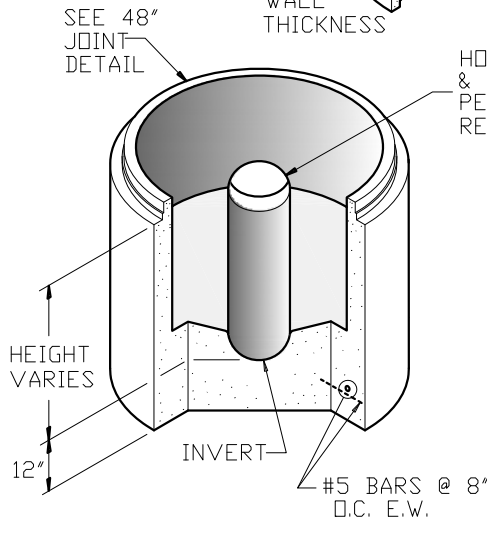
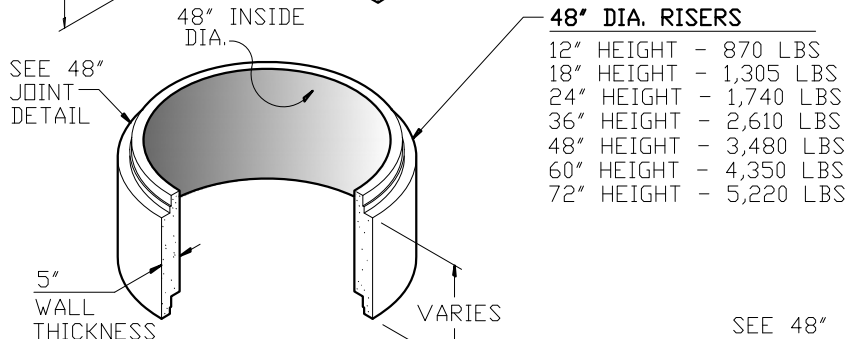
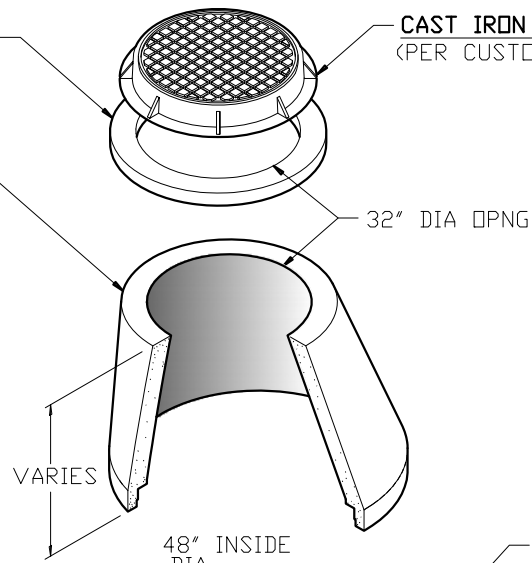


**FLEXIBLE BOOT  
CONNECTOR**  
(PER ASTM C-923)

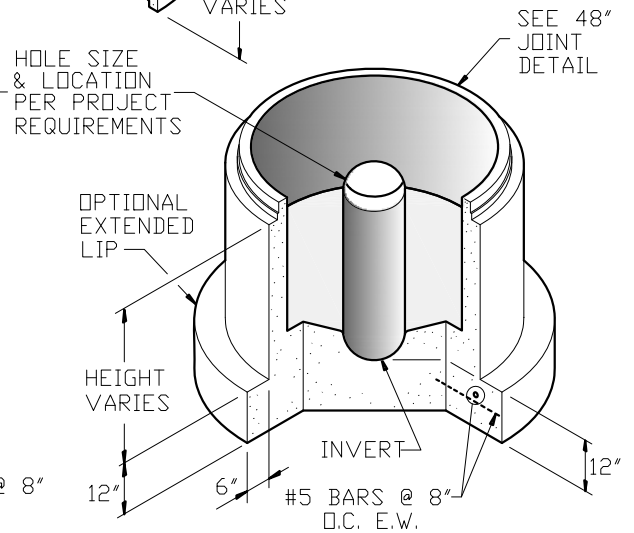


**48" JOINT DETAIL**

NOTE:  
PLEASE REFER TO NC PIPE  
FOR ALL PRECAST BASE  
HEIGHTS AND WEIGHTS.



**48" DIA. VARIABLE HEIGHT BASE**



**48" DIA. VARIABLE HEIGHT BASE  
WITH OPTIONAL EXTENDED LIP**

**GENERAL NOTES:**

- DESIGN SHALL MEET OR EXCEED ASTM C-478 SPECIFICATIONS
- 4500 PSI CONCRETE AT 28 DAYS
- ATSM A615, GRADE 60 REINFORCING
- HS 20 LOADING
- JOINT CONNECTIONS TO BE GASKETS CONFORMING TO ASTM C-443 REQUIREMENTS

**OPTIONAL COATINGS &  
ADMIXTURES AVAILABLE:**

- FE-100 THANE COAT
- BITUMASTIC
- XYPEX
- CONSHIELD



9235 Main Street #1  
P.O. Box 507  
Needville, Texas, 77461  
1-888-331-5871

"Providing Concrete Environmental Solutions"

48" DIA. ECCENTRIC SANITARY  
MANHOLE WITH VARIABLE HEIGHT BASE

NC-001-004

Scale: 1/4"=1'-0"  
\* All Dimensions subject to allowable  
specification tolerances.

Date: 02/21/18

Approved By: \_\_\_\_\_ Date: \_\_\_\_\_