

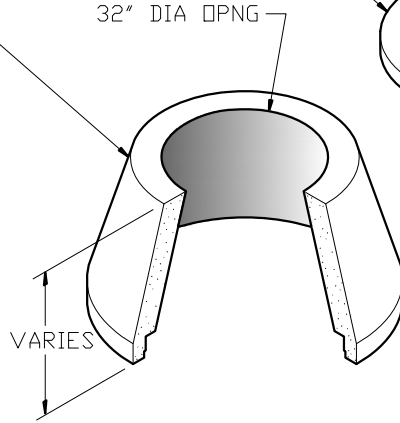
3' ADJUSTMENT RING (AS REQ.)
WEIGHT - 145 LBS

CAST IRON RING & COVER
(PER CUSTOMER SPECS.)

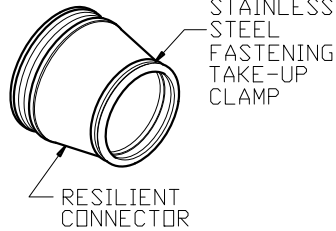
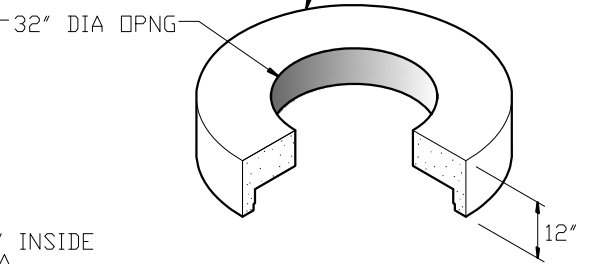
48" DIA. CONCENTRIC CONE

- 24" HEIGHT - 1,740 LBS
- 30" HEIGHT - 2,175 LBS
- 36" HEIGHT - 2,610 LBS
- 42" HEIGHT - 3,045 LBS
- 48" HEIGHT - 3,480 LBS
- 60" HEIGHT - 4,350 LBS

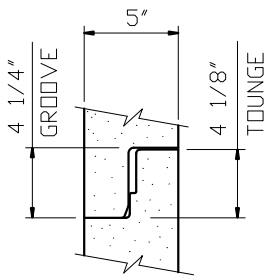
NOTE:
48" DIA ECCENTRIC CONE
AVAILABLE AS REQ'D



48" SLAB TOP
WEIGHT - 1,550 LBS

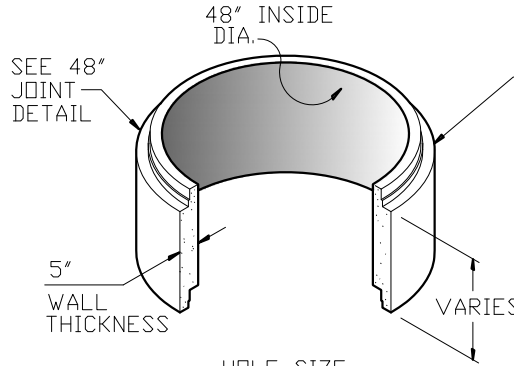


FLEXIBLE BOOT CONNECTOR
(PER ASTM C-923)

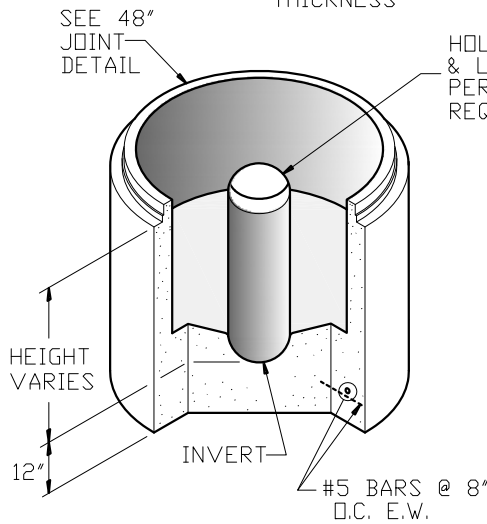


48" JOINT DETAIL

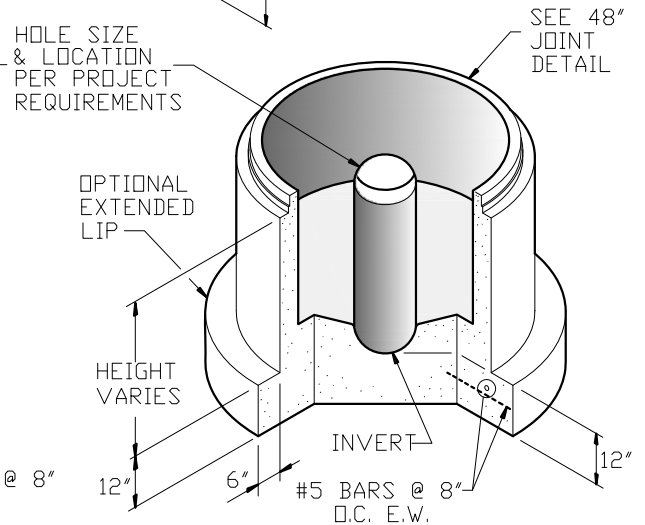
NOTE:
PLEASE REFER TO NC PIPE
FOR ALL PRECAST BASE
HEIGHTS AND WEIGHTS.



- 48" DIA. RISERS**
- 12" HEIGHT - 870 LBS
 - 18" HEIGHT - 1,305 LBS
 - 24" HEIGHT - 1,740 LBS
 - 36" HEIGHT - 2,610 LBS
 - 48" HEIGHT - 3,480 LBS
 - 60" HEIGHT - 4,350 LBS
 - 72" HEIGHT - 5,220 LBS



48" DIA. VARIABLE HEIGHT BASE



**48" DIA. VARIABLE HEIGHT BASE
WITH OPTIONAL EXTENDED LIP**

GENERAL NOTES:

- DESIGN SHALL MEET OR EXCEED ASTM C-478 SPECIFICATIONS
- 4500 PSI CONCRETE AT 28 DAYS
- ATSM A615, GRADE 60 REINFORCING
- HS 20 LOADING
- JOINT CONNECTIONS TO BE GASKETS CONFORMING TO ASTM C-443 REQUIREMENTS

OPTIONAL COATINGS & ADMIXTURES AVAILABLE:

- FE-100 THANE COAT
- BITUMASTIC
- XYPEX
- CONSHIELD



9235 Main Street #1
P.O. Box 507
Needville, Texas, 77461
1-888-331-5871

"Providing Concrete Environmental Solutions"

48" DIA. SANITARY MANHOLE
WITH VARIABLE HEIGHT BASE

NC-001-002

Scale: 1/4"=1'-0"
* All Dimensions subject to allowable
specification tolerances.

Date: 02/28/18

Approved By: _____ Date: _____