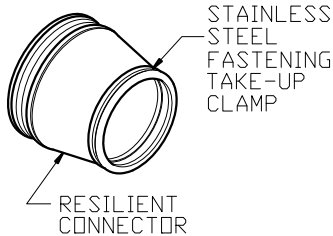


**60" JOINT DETAIL**



**FLEXIBLE BOOT CONNECTOR**  
(PER ASTM C-923)

NOTE:  
PLEASE REFER TO NC PIPE  
FOR ALL PRECAST BASE  
HEIGHTS AND WEIGHTS.

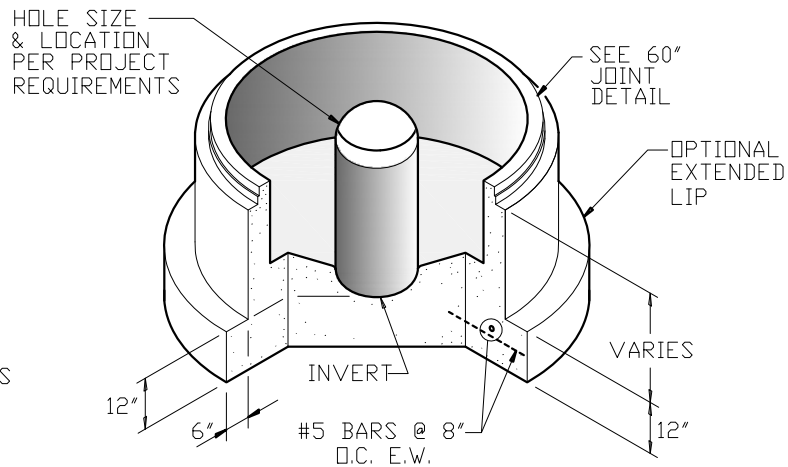
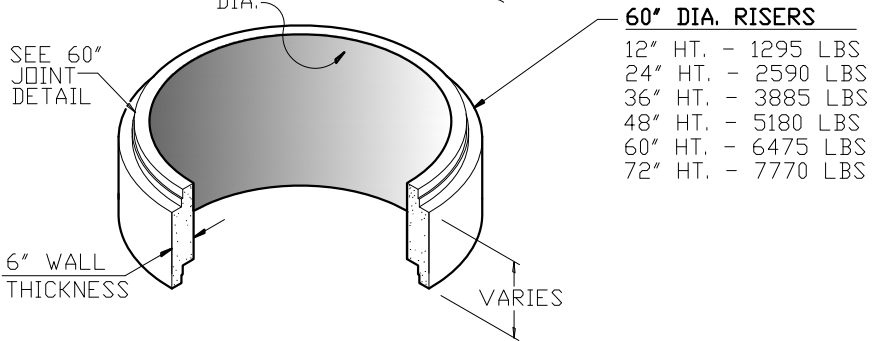
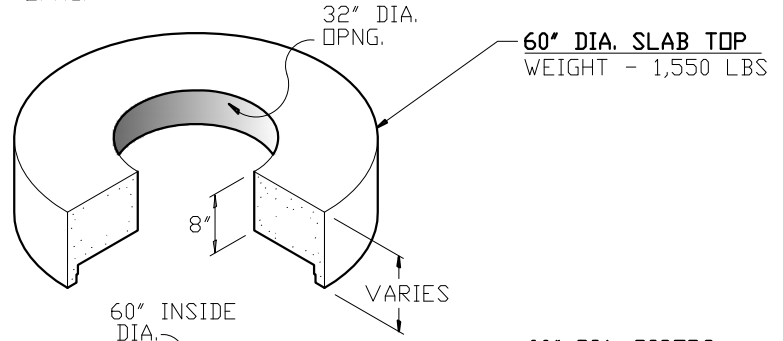
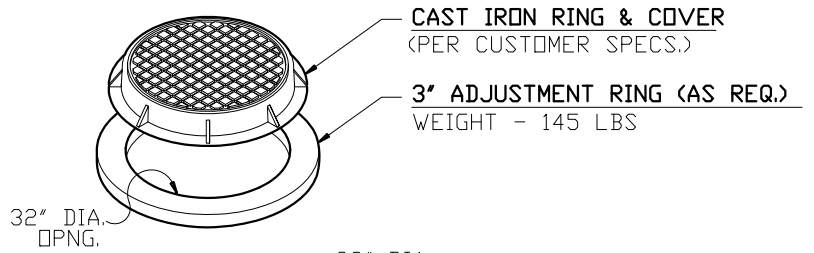
NOTE:  
OPTIONAL EXTENDED LIP  
AVAILABLE PER CUSTOMER  
SPECIFICATIONS.

**GENERAL NOTES:**

- DESIGN SHALL MEET OR EXCEED ASTM C-478 SPECIFICATIONS
- 4500 PSI CONCRETE AT 28 DAYS
- ATSM A615, GRADE 60 REINFORCING
- HS 20 LOADING
- JOINT CONNECTIONS TO BE GASKETS CONFORMING TO ASTM C-443 REQUIREMENTS

**OPTIONAL COATINGS & ADMIXTURES AVAILABLE:**

- FE-100 THANE COAT
- BITUMASTIC
- XYPEX
- CONSHIELD



**60" DIA. VARIABLE HEIGHT BASE**



60" DIA. SLAB TOP  
SANITARY MANHOLE



9235 Main Street #1  
P.O. Box 507  
Needville, Texas, 77461  
1-888-331-5871

"Providing Concrete Environmental Solutions"

NC-001-007

Scale: 1/4"=1'-0"  
\* All Dimensions subject to allowable specification tolerances.

Date: 02/26/18

Approved By: \_\_\_\_\_ Date: \_\_\_\_\_