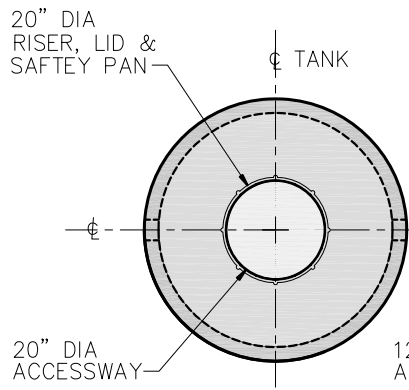
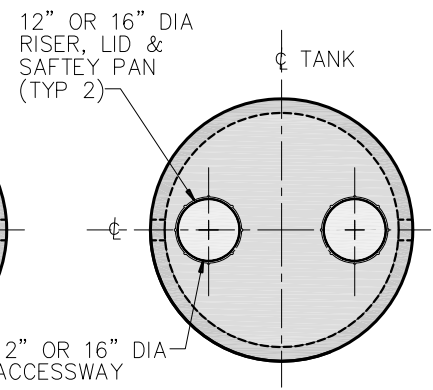


PLAN VIEW
(STANDARD) SLAB TOP – ST-1
 W/ 2-12" X 12" CONCRETE
 PLUGS CAST INTO LID

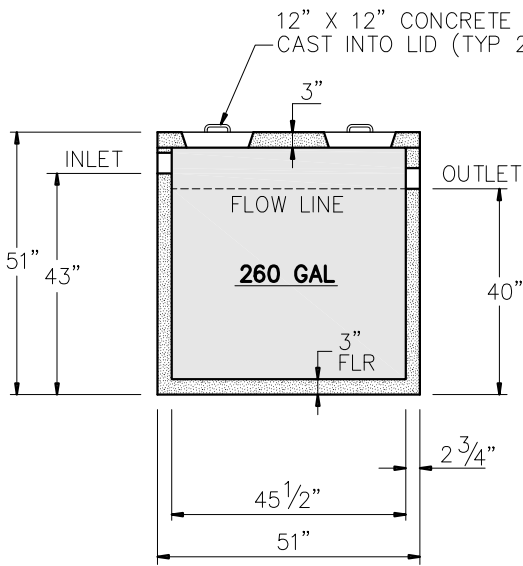
260 GAL



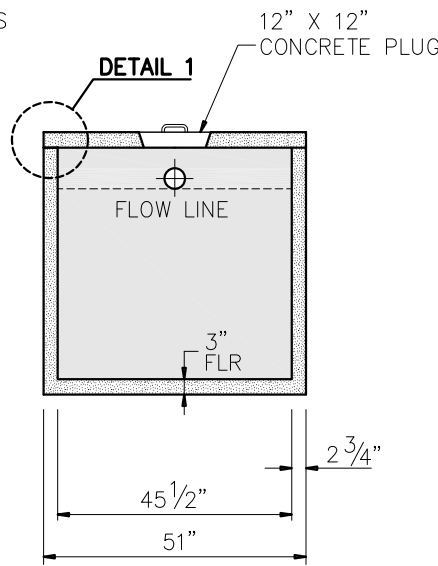
PLAN VIEW
(OPTIONAL) SLAB TOP – ST-2
 W/ 1-20" ID X 6" HEIGHT
 RISER, LID & SAFETY PAN



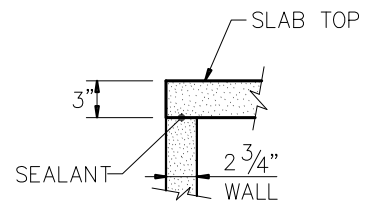
PLAN VIEW
(OPTIONAL) SLAB TOP – ST-3
 W/ 2-16" OR 12" ID X 6" HEIGHT
 RISER, LID & SAFETY PAN



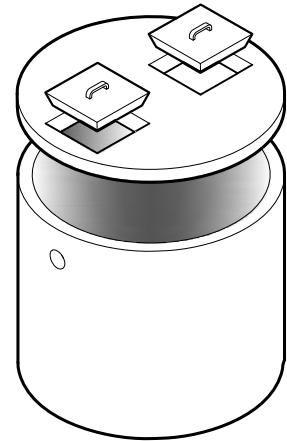
SECTION A-A



SECTION B-B



DETAIL 1



ISOMETRIC

GENERAL NOTES:

- DESIGN SHALL MEET OR EXCEED EXCEED ASTM C-1227 SPECIFICATIONS
- 4000 PSI CONCRETE AT 28 DAYS
- ASTM A615, GRADE 60 REINFORCING
- BAR BENDING AND PLACEMENT PER ACI STANDARDS

NOTE:

APPROX WEIGHTS INCLUDING
 SLAB TOP & BOTTOM SECTION
 WEIGHT – 3370 LBS
 CAPACITY – 260 GAL



9235 Main Street #1
 P.O. Box 507
 Needville, Texas, 77461
 1-888-331-5871

250 GALLON TANK
 (ROUND)

"Providing Concrete Environmental Solutions"

NC-004-023

Scale: 1/4"=1'-0"
 * All Dimensions subject to
 allowable specification tolerances.

Date: 04/12/19

Rev Date:

Approved By: _____ Date: _____