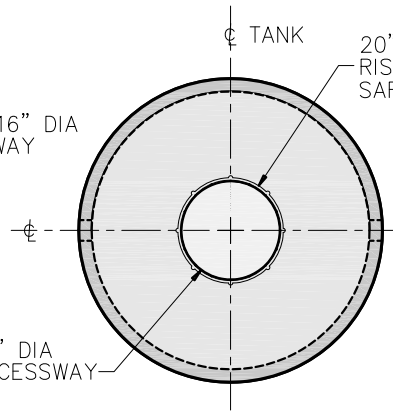
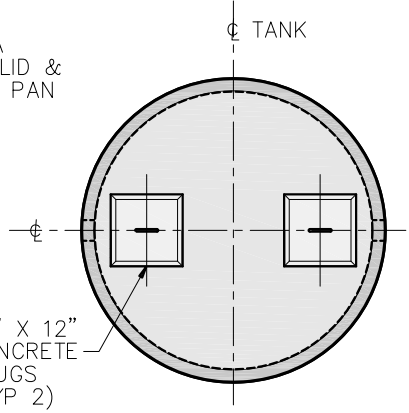


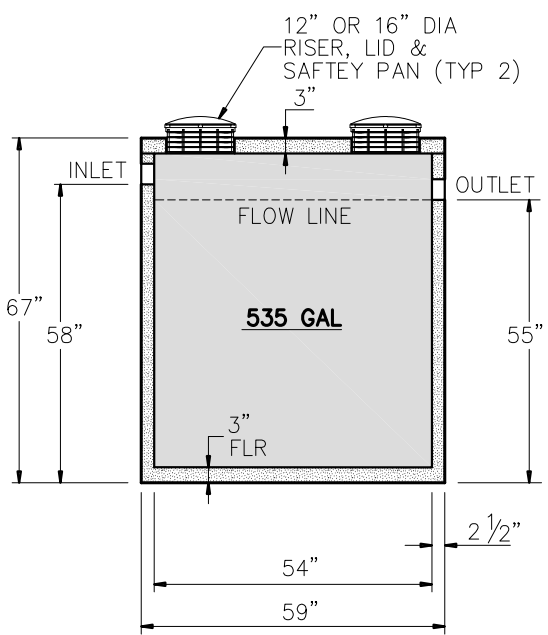
**PLAN VIEW**  
**STANDARD SLAB TOP – ST-1**  
 W/ 2-16" OR 12" ID X 6" HEIGHT  
 RISER, LID & SAFETY PAN



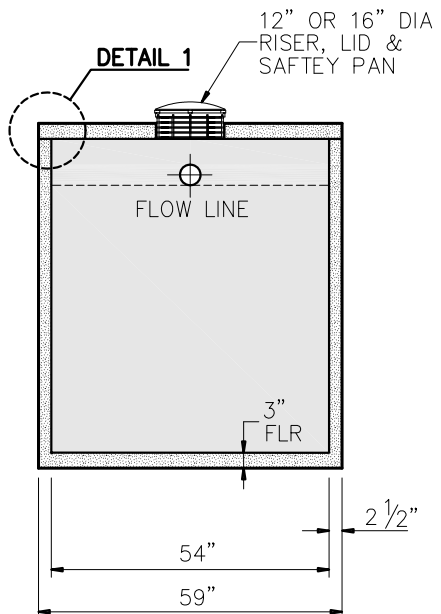
**PLAN VIEW**  
**(OPTIONAL) SLAB TOP – ST-2**  
 W/ 1-20" ID X 6" HEIGHT  
 RISER, LID & SAFETY PAN



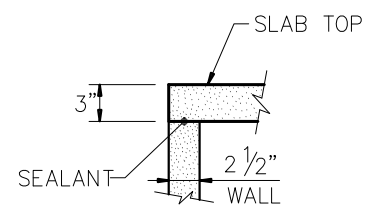
**PLAN VIEW**  
**(OPTIONAL) SLAB TOP – ST-3**  
 W/ 2-12" X 12" CONCRETE  
 PLUGS CAST INTO LID



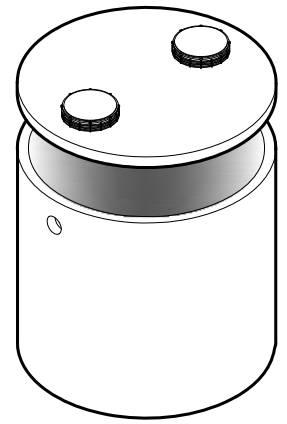
**SECTION A-A**  
 W/ 3" OFFSET



**SECTION B-B**



**DETAIL 1**



**ISOMETRIC**

**GENERAL NOTES:**

- DESIGN SHALL MEET OR EXCEED EXCEED ASTM C-1227 SPECIFICATIONS
- 4000 PSI CONCRETE AT 28 DAYS
- ASTM A615, GRADE 60 REINFORCING
- BAR BENDING AND PLACEMENT PER ACI STANDARDS

**NOTE:**

APPROX WEIGHTS INCLUDING SLAB TOP & BOTTOM SECTION  
 WEIGHT – 4200 LBS  
 CAPACITY – 535 GAL  
 10.3 GALS PER INCH (APPROX)



9235 Main Street #1  
 P.O. Box 507  
 Needville, Texas, 77461  
 1-888-331-5871

"Providing Concrete Environmental Solutions"

**500 GALLON TANK  
 (ROUND)  
 'A' STYLE – W/ 3" OFFSET**

NC-004-021

Scale: 1/4"=1'-0"  
 \* All Dimensions subject to allowable specification tolerances.

Date: 04/10/19

Rev Date:

Approved By: \_\_\_\_\_ Date: \_\_\_\_\_