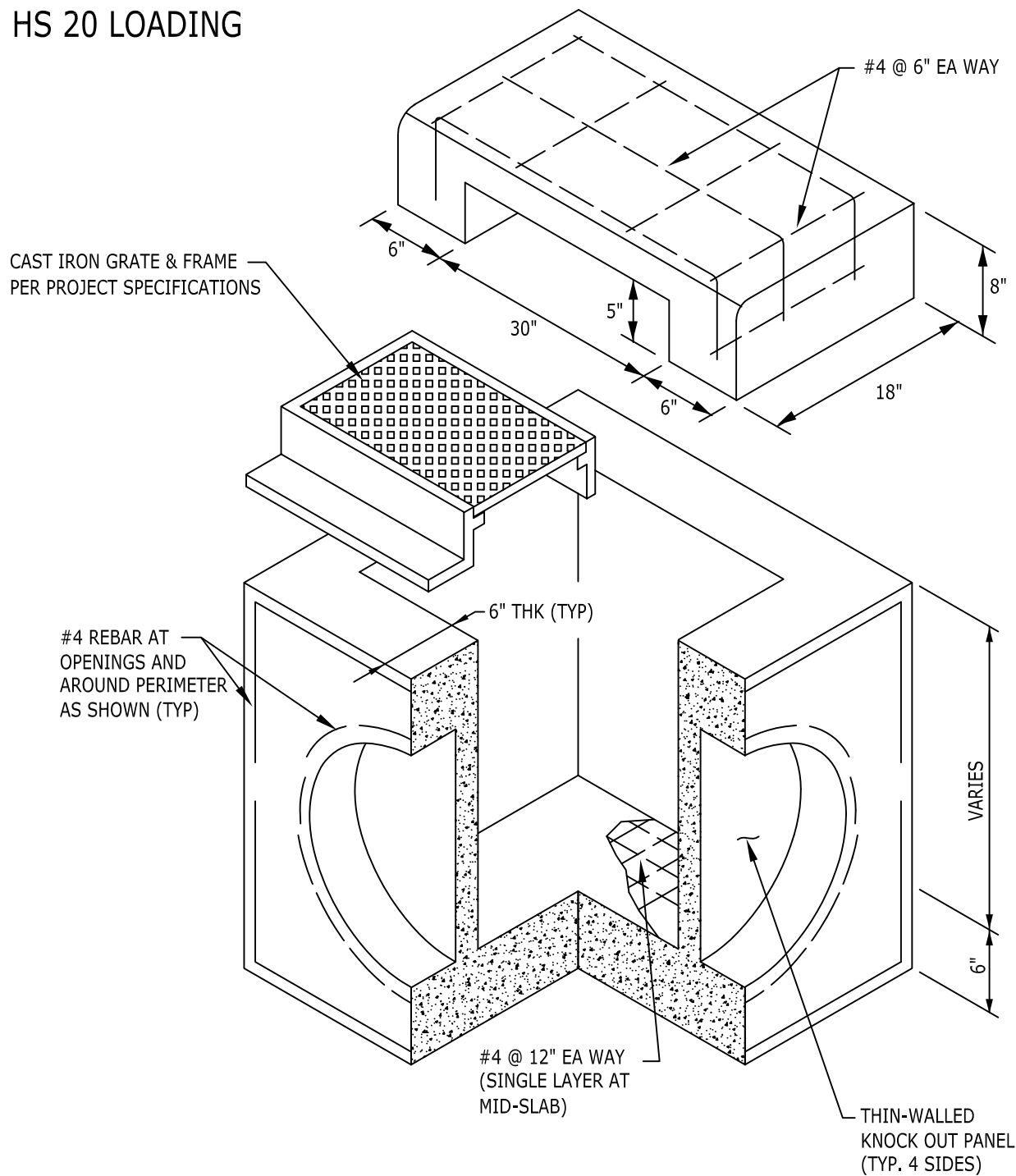


4000 PSI CONCRETE  
 GRADE 60 REINFORCING  
 HS 20 LOADING



ELEVATION VIEW



9235 Main Street #1  
 P.O. Box 507  
 Needville, Texas, 77461  
 1-888-331-5871

TYPE 'B' CURB INLET  
 30" x 30" I.D.

"Providing Concrete Environmental Solutions"

Date: 13 APRIL 2010

File: NCBINLET\_8

Scale: 1"=1'-0"

\* All Dimensions subject to allowable specification tolerances.

Approved By: \_\_\_\_\_ Date: \_\_\_\_\_